



sustrans

JOIN THE MOVEMENT

# Community Links Programme



# What is the Community Links Programme?



# Why?

Target of the Cycling Action Plan for Scotland (CAPS) of **ten percent of trips by bike by 2020,**

- Provides funding for the creation of cycling network infrastructure and tackles a barrier for new cyclists.



# Objectives of the Community Links Programme 2012/13:



All projects must improve the infrastructure available for cycling or cycling AND walking and should also take into consideration the needs of other users.

- Link the places people live in with the places they want to get to
- Encourage people to cycle or use another active mode on everyday journeys and increase cycling modal share
- Meet an identified community need and demand

# What can Community Links programme fund?

Community Link projects can fit into three stages, delivered in one or more financial year;

- **Pre construction**
- **Construction**
- **Post construction**



# Pre Construction in 2014-16



- Feasibility studies
- Community engagement to develop new projects
- Land negotiation, planning process etc
- Design of the project including signage
- Baseline monitoring

# Construction in 2014-16

- Projects which result in routes of reasonable cycling and walking distance
- Formalising desire lines
- Upgrading and repair of existing surfaces
- Route destination signage
- Replacement of steps with ramps
- Reduction of gradients which do not comply with Equality (DDA) Legislation
- Addition of wheeling ramps to steps
- On road cycle provision
- Installation of flush kerbs
- Provision of TOUCAN and Zebra crossings as part of the network
- Provision of raised table crossings
- Provision of appropriate bridges
- Removal of access controls or improving access controls to meet Equality (DDA) Legislation
- Provision of lighting
- Enhancements to existing cycling and walking networks, including the (NCN)



# Post Construction in 2014-16

- Promotion and awareness raising through mapping and improved signage
- Enhanced signage of destinations onto and off a path
- Installation and/or upgrade to monitoring equipment



# Additional possibilities

Match funding can be used for :

- Measures to help ensure the legacy of a project
- Ongoing monitoring
- Events and community engagement workshops



# Community Links Match Funding Requirements



Sustrans Community Links Programme can provide up to 50% of project costs.

The partner must find the remaining costs from another source:

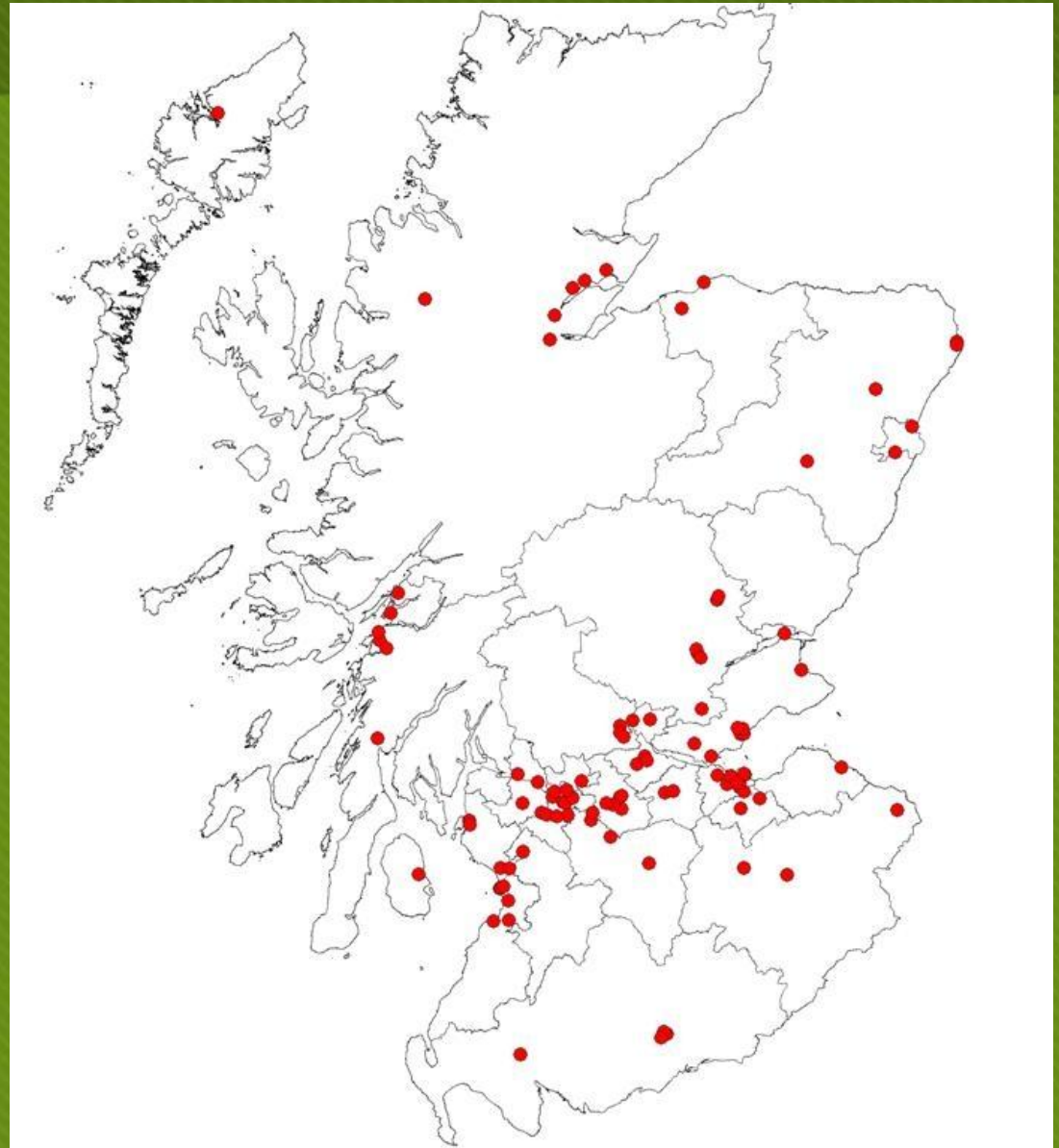
- Cycling Walking Safer Streets
- Developer Gain
- Other Council Budget (i.e. School or Green Spaces)
- Match from within Applicant Organisation
- Any other source

# Community Links Projects 2012/13

99 Projects

30 Partners

£3,800,000



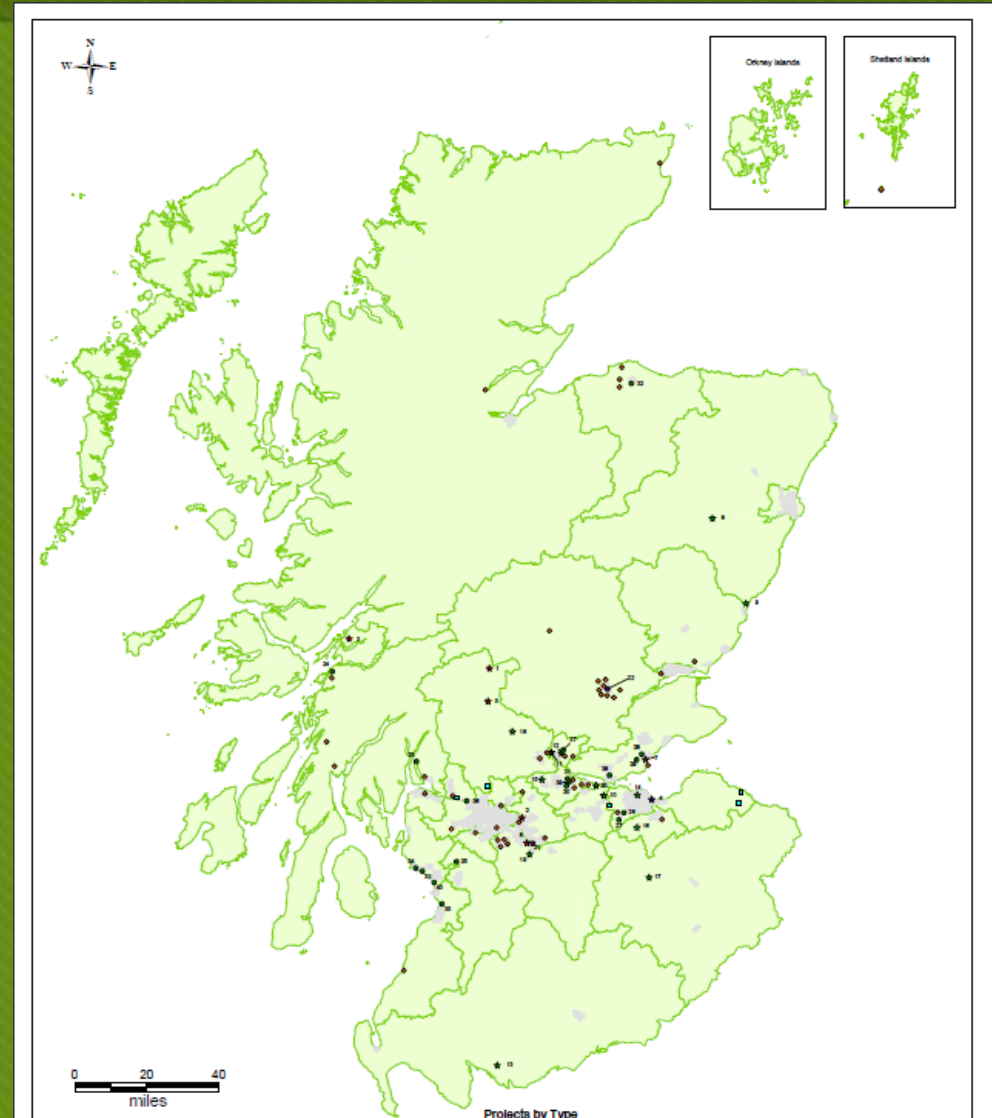


# Short Links Projects 2010/11

65 Projects

26 Partners

£2,017,256



# Examples of Community Links Projects



# Tarbert Shared Use Path, Argyll and Bute

- Links the local school campus to residential areas, a play-park and the local football fields and pavilion.
- A shared-use active travel path 250m in length.





# Upgrading of NCN 75 at Uddingston Grammar School, South Lanarkshire

Upgrading of a 320 metre length of the NCN 75 adjacent to Uddingston Grammar School and the River Clyde

Additional direction signing, listing pertinent destinations and distances, was incorporated.



# Glen Road, Dunblane, Stirling

Restore a 1km length of old road

- accumulated vegetative detritus,
- fixing fences,
- painting bollards,
- clearing trees,
- planting trees in old landslip areas
- installing signs

In partnership with the local community

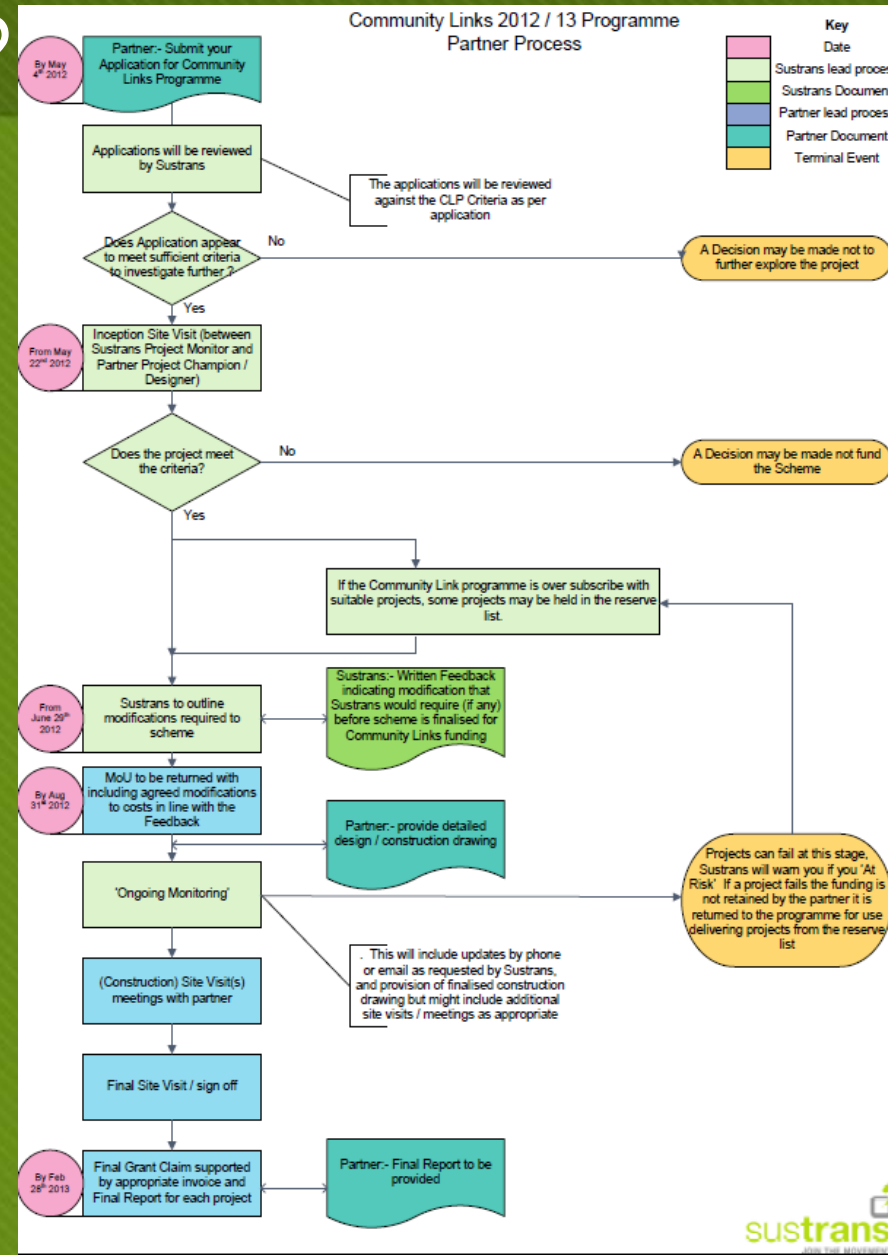


# What do you need to access Community Links funding?



# How does my Local Authority access Community Links funding?

1. Receive call from Sustrans
2. Complete application and supply additional information
3. Sustrans review and arrange site visit
4. Receive and return Memorandum of Understanding for successful projects
5. Deliver projects



# Meet an identified community need and demand

Show evidence of community need and/or support for the improvements, e.g. reference to

- School Travel Plans,
- Core Path Plans,
- Local Transport Strategies,
- Contact from Community Groups, Active Travel Strategies
- Evidence of community demand such as through a local group's interest.

